

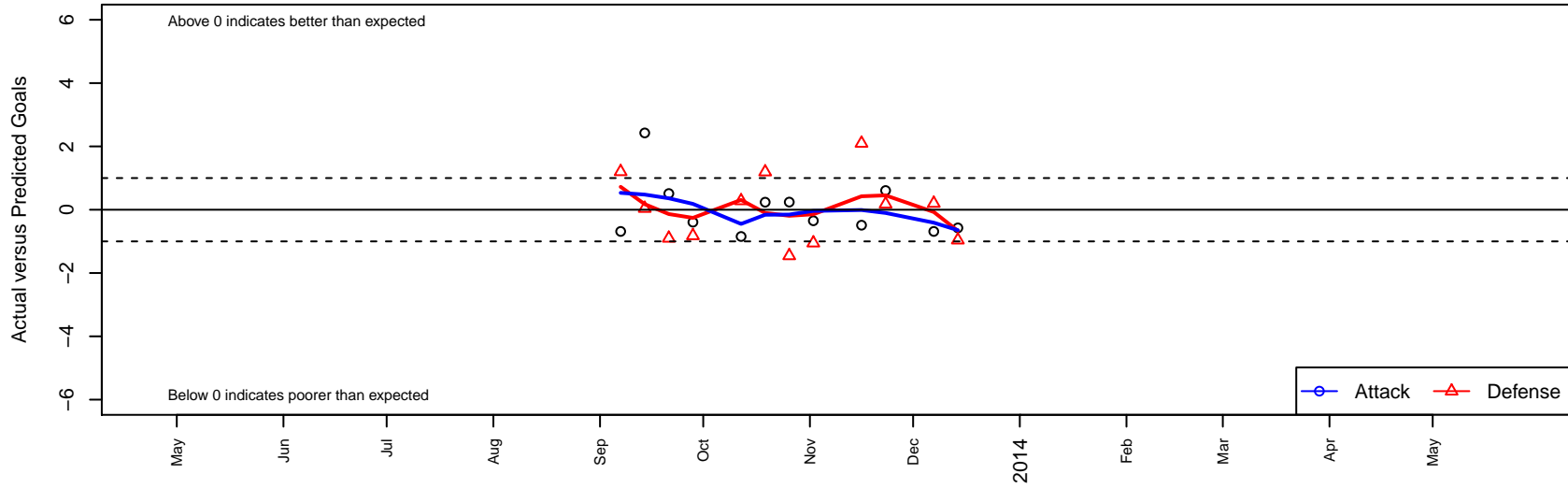
Silver Lake SC Panthers G01

Silver Lake SC
 Silver Lake, WA
 G01 total strength=78
 attack=0.07 defense=0.1
 fall league = NPSL G12D3
 alt names used:
 Silver Lake SC Panthers

Venues played:
 NPSL G12D3



Silver Lake SC Panthers G01
 Dots are actual minus expected GF (blue circles) and GA (red triangles).
 Blue line is smoothed change in attack strength. Red is smoothed change in defense strength.



	date	home		away		venue	pred.home	pred.away
6845	2013-12-14	Silver Lake SC Panthers G01	0	Mukilteo Rush G01	3	NPSL G12D3	0.57	2.04
6823	2013-12-07	BYSC Select Cambell G01	1	Silver Lake SC Panthers G01	0	NPSL G12D3	1.20	0.69
6676	2013-11-23	Silver Lake SC Panthers G01	1	Storm King G01	3	NPSL G12D3	0.39	3.18
6588	2013-11-16	Silver Lake SC Blueberries G01	0	Silver Lake SC Panthers G01	0	NPSL G12D3	2.10	0.49
6342	2013-11-02	Silver Lake SC Panthers G01	0	Granite Falls Thunderbirds G01	3	NPSL G12D3	0.35	1.95
6186	2013-10-26	MIFC Grizzlies G01	2	Silver Lake SC Panthers G01	2	NPSL G12D3	0.54	1.76
6028	2013-10-19	Seattle United W White G01	0	Silver Lake SC Panthers G01	1	NPSL G12D3	1.19	0.76
5865	2013-10-12	Silver Lake SC Panthers G01	0	Newport FC Predators-Galaxy G01	1	NPSL G12D3	0.85	1.28
5510	2013-09-28	Storm King G01	4	Silver Lake SC Panthers G01	0	NPSL G12D3	3.18	0.39
5376	2013-09-21	Silver Lake SC Panthers G01	1	Silver Lake SC Blueberries G01	3	NPSL G12D3	0.49	2.10
5209	2013-09-14	Mukilteo Rush G01	2	Silver Lake SC Panthers G01	3	NPSL G12D3	2.04	0.57
5056	2013-09-07	Silver Lake SC Panthers G01	0	BYSC Select Cambell G01	0	NPSL G12D3	0.69	1.20